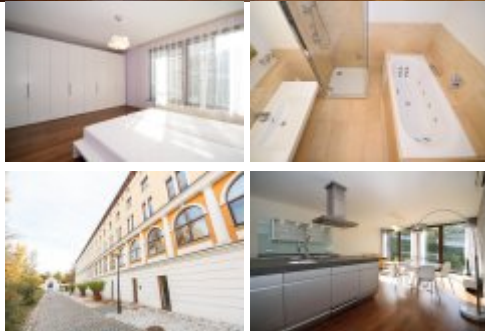




## Fully furnished apartment for rent, 2 + kt, 84 sqm, garage, Prague 6 - Bubeneč

Bright and modern apartment for rent, 2 + kt with total area of 84 sqm. The apartment is located in the Mlýnská street, Prague 6 - Bubeneč. The apartment is situated on the 1st floor of the house with an elevator and consists of a spacious living room with a modern kitchenette with built-in appliances (dishwasher, glass ceramic hob, fridge), bedroom, bathroom with bath and shower, toilet and cloakroom. The apartment is rented fully furnished with custom furniture. The apartment has built-in wardrobes, sofa, bed, TV. Possibility of parking in the underground garage for a fee of 2000 CZK + VAT/month. All civic amenities are in the vicinity. Location of the apartment offers many opportunities how to spend leisure time, the house is directly adjacent to the park Stromovka. Tennis courts are also nearby. Possibility of short-term lease (from one month).



Cena:	<b>25 000 CZK</b> per month
Offer ID	<b>68228</b>
Address	<b>Mlýnská, Praha 6 - Bubeneč</b>
Building	<b>brick</b>
State	<b>very good</b>
Ownership	<b>personal</b>
Etage	<b>3rd floor</b>
Usable area	<b>84 m<sup>2</sup></b>
Garage	<b>yes</b>
Lift	<b>yes</b>
Furnished	<b>yes</b>
PENB	<b>G</b>
Available	<b>immediately</b>

### Contact a broker



**Ing. Michaela Csizmarová**  
broker  
Office: Prague central



E-mail: [michaela.csizmarova@homesweethome.cz](mailto:michaela.csizmarova@homesweethome.cz)  
Mobile phone: +420 608 444 030